



8 Cornforth Close, Gateshead, NE10 8SN

Offers Over £175,000

Nestled in the tranquil and sought-after area of Cornforth Close, this spacious and immaculately presented end-terrace house is a true gem. Upon entering, you are welcomed into a lovely lounge that features convenient under-stair storage, providing both comfort and practicality. The heart of the home is the dining kitchen, which is well-equipped with an integrated oven, induction hob, washing machine, and fridge, making it perfect for culinary enthusiasts. French doors lead you from the kitchen to a charming rear patio area, ideal for al fresco dining or simply enjoying the outdoors. The first floor boasts a well-appointed landing that leads to the main bedroom, which offers a pleasant outlook to the front elevation, creating a serene atmosphere. There are two additional bedrooms, one of which benefits from a built-in storage cupboard, ensuring ample space for your belongings. The recently refurbished bathroom adds a touch of modern elegance to the home. Outside, the property features low-maintenance gardens, allowing you to enjoy your outdoor space without the hassle of extensive upkeep. A single garage is conveniently located at the rear of the home, complete with a side exit door that leads directly into the garden. This delightful home is a perfect blend of comfort and style, making it an ideal choice for families or professionals alike. Viewings are essential to fully appreciate all that this property has to offer. Don't miss the opportunity to make this charming house your new home.

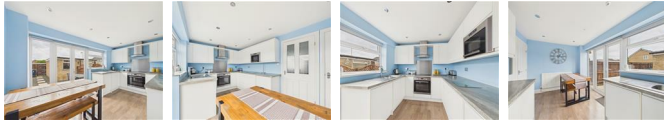
LOUNGE

18'1" x 11'8" (5.52m x 3.58m)



DINING KITCHEN

14'7" x 8'7" (4.46m x 2.64m)

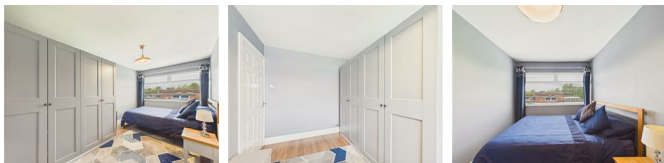


FIRST FLOOR LANDING



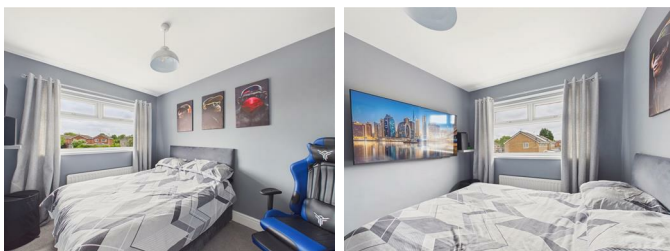
BEDROOM ONE

15'5" x 8'2" (4.71m x 2.51m)



BEDROOM TWO

10'0" x 8'8" (3.05m x 2.65m)



BEDROOM THREE

10'2" x 5'11" (3.10m x 1.81m)



BATHROOM

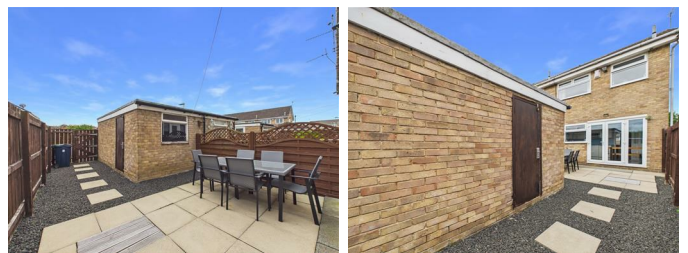
6'8" x 5'10" (2.05m x 1.78m)



EXTERNAL



GARAGE



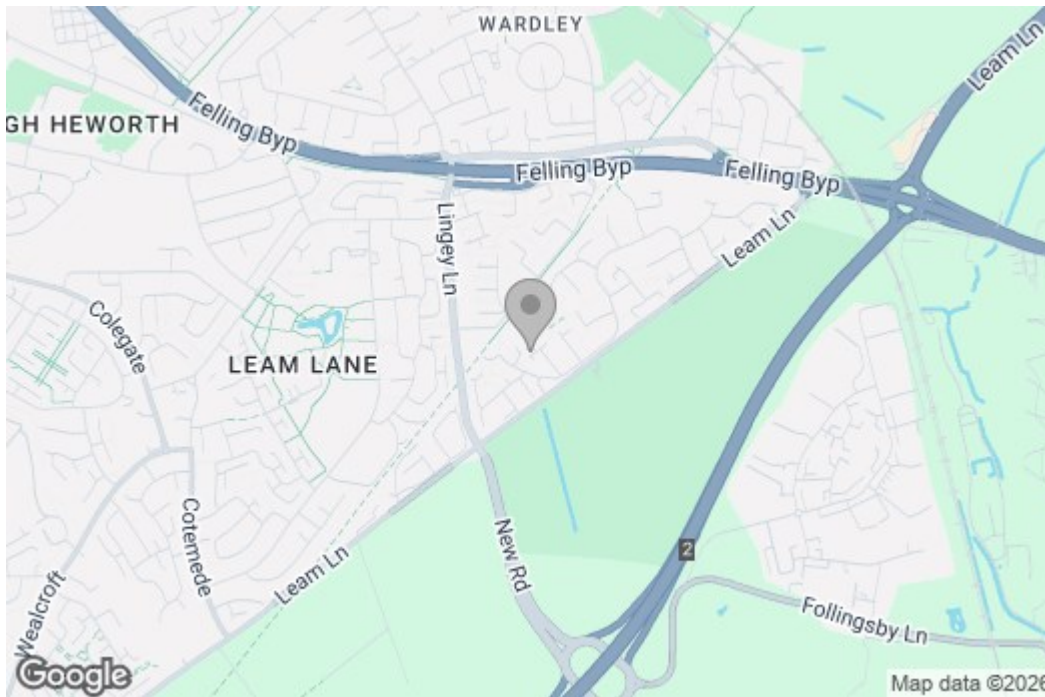
Property disclaimer

IMPORTANT NOTE TO PURCHASERS: We endeavour to make our sales particulars accurate and reliable, however, they do not constitute or form part of an offer or any contract and none is to be relied upon as statements of representation or fact. The services, systems and appliances listed in this specification have not been tested by us and no guarantee as to their operating ability or efficiency is given. All measurements have been taken as a guide to prospective buyers only, and are not precise. Floor plans where included are not to scale and accuracy is not guaranteed. If you require clarification or further information on any points, please contact us, especially if you are travelling some distance to view. Fixtures and fittings other than those mentioned are to be agreed with the seller. We cannot also confirm at this stage of marketing the tenure of this house.

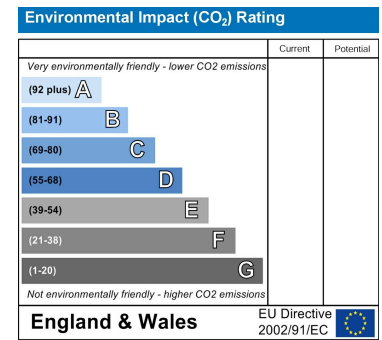
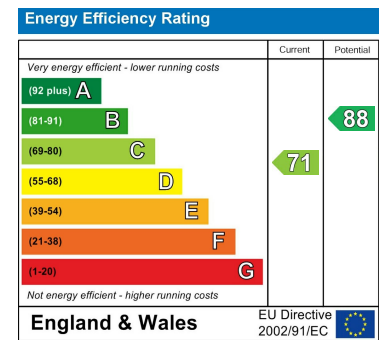
Floor Plan



Area Map



Energy Efficiency Graph



These particulars, whilst believed to be accurate are set out as a general outline only for guidance and do not constitute any part of an offer or contract, purchaser should not rely on them as statements of representation of fact, but must satisfy themselves by inspection or otherwise as to their accuracy. No person in this firm's employment has the authority to make or give an representation or warranty in respect of the property.